

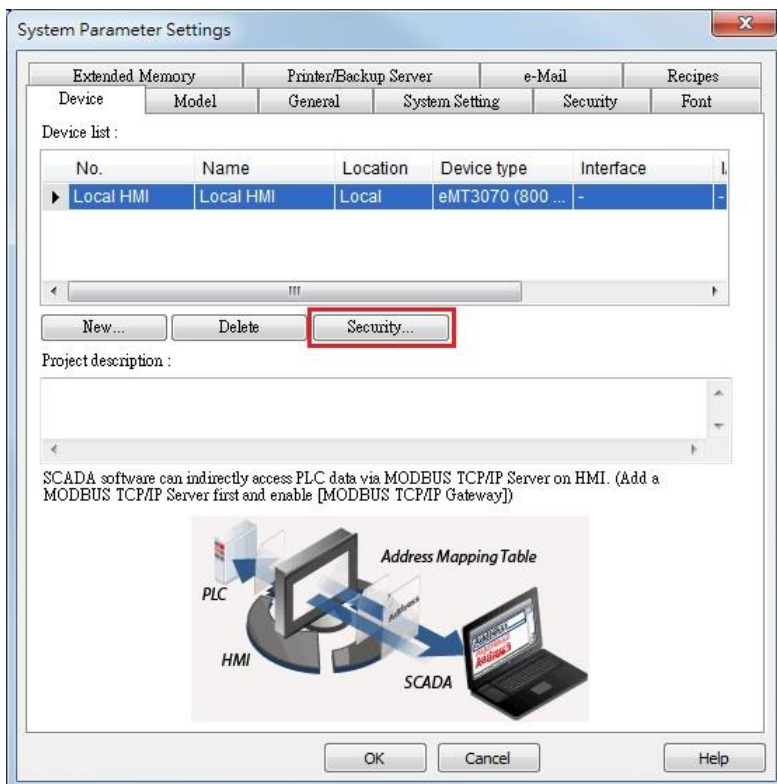
# 39. Data Security

This chapter explains how to setup Data Security.

39.1. Overview.....	39-2
39.2. Configuration .....	39-2

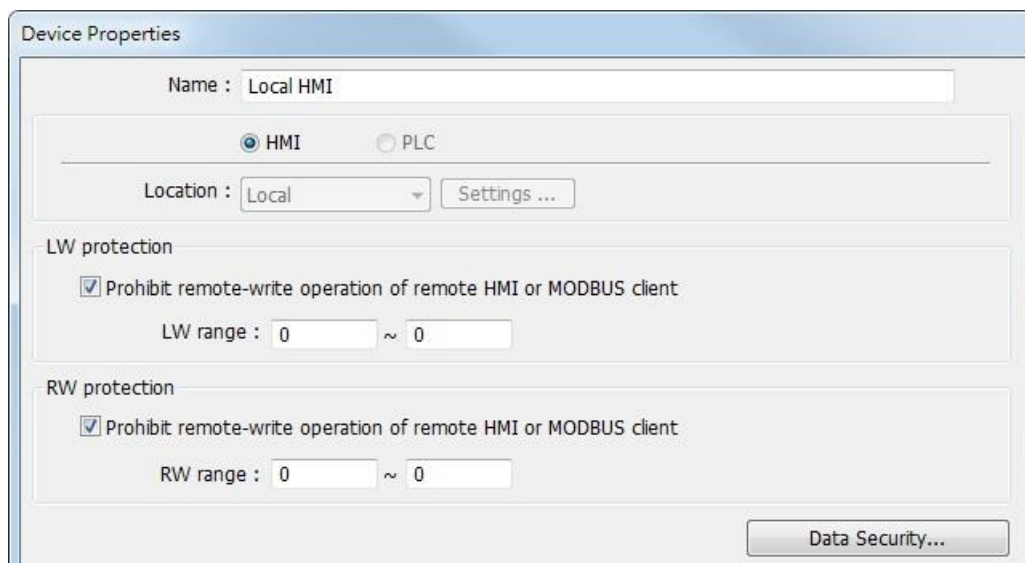
## 39.1. Overview

Data Security allows setting restrictions on the write operations that modify local Word or Bit register data. To do so, open [System Parameter Settings] » [Device] tab, select [Local HMI] and then click [Security...] button.



## 39.2. Configuration

The following is the settings dialog box:



Setting	Description
<b>LW protection \ Prohibit remote-write operation of remote HMI or MODBUS client</b>	If selected, a remote HMI or MODBUS client will not be able to write to the specified LW addresses.
<b>RW protection \ Prohibit remote-write operation of remote HMI or MODBUS client</b>	If selected, a remote HMI or MODBUS client will not be able to write to the specified RW addresses.

Click [Data Security] button to set the restrictions on the write operations that modify local Word or Bit register data.

### 39.2.1. Word address settings

Set the restrictions relevant to local Word addresses.

Setting	Description
<b>Description</b>	Enter the description or memo about this setting.
<b>Address Mode</b>	Select [Word] to set the relevant attributes.
<b>Min. value</b>	Set the minimum value that can be written to the designated word address.
<b>Max. value</b>	Set the maximum value that can be written to the designated word address.
<b>Disable remote-write operation</b>	If selected, the remote HMI will not be able to write to the protected address.
<b>Used only in remote-write operation</b>	If selected, the range between [Min. value] and [Max. value] is only used to restrict the value written by a remote device.
<b>Use min. value when write value is less than min. value</b>	If selected, when the written value is less than [Min. value], the system will write the specified minimum value instead. If not selected, when the written value is less than [Min. value], the system will keep the original value.
<b>Use max. value when write value is more than max. value</b>	If selected, when the written value is greater than [Max. value], the system will write the specified maximum value instead.

If not selected, when the written value is greater than [Max. value], the system will keep the original value.

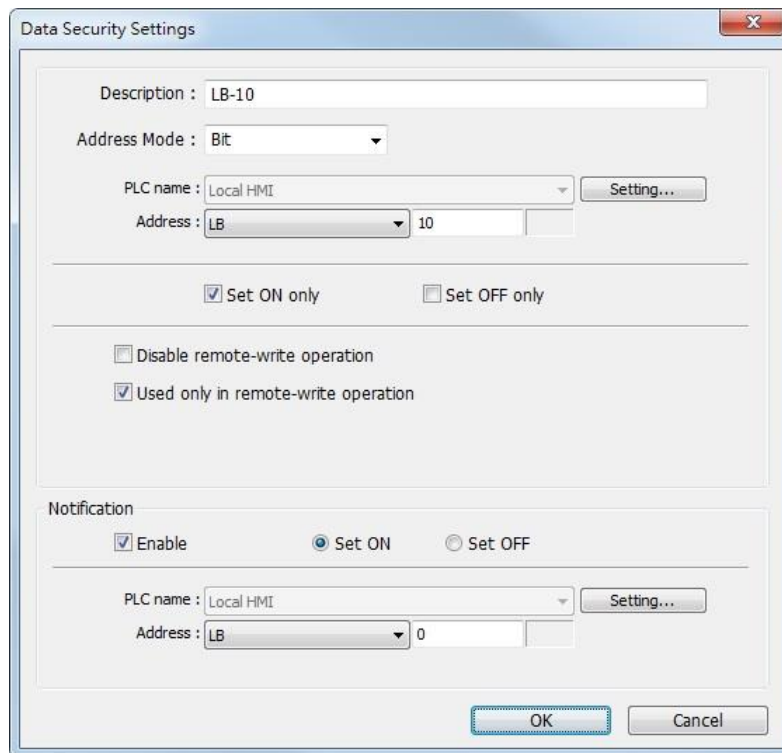
### Notification

When the written value is not within the specified range between [Min. value] and [Max. value], the system will trigger the designated notification bit address.

As shown in the preceding figure, the remote HMI will not be able to write to LW-0, and when the value written to the local address is greater than 10, the value 10 is written instead, and the notification bit LB-0 will be set ON.

### 39.2.2. Bit address settings

Set the restrictions relevant to local Bit addresses.



Setting	Description
<b>Description</b>	Enter the description or memo about this setting.
<b>Address Mode</b>	Select [Bit] to set the relevant attributes.
<b>Set ON only</b>	If selected, the designated bit address can only be set ON.
<b>Set OFF only</b>	If selected, the designated bit address can only be set OFF.

---

<b>Disable remote-write operation</b>	If selected, the remote HMI will not be able to write to the protected address.
<b>Used only in remote-write operation</b>	If selected, the specified condition is only used to restrict the write operation by a remote device.
<b>Notification</b>	When enabled and: <ul style="list-style-type: none"><li>● Select [Set ON], the system will trigger the notification bit address when attempting to set OFF the protected bit address.</li><li>● Select [Set OFF], the system will trigger the notification bit address when attempting to set ON the protected bit address.</li></ul>

---

As shown in the preceding figure, the remote HMI can only set ON LB-10, while the local HMI is not restricted. If the remote HMI attempts to set LB-10 OFF, the system will trigger notification bit LB-0 ON.